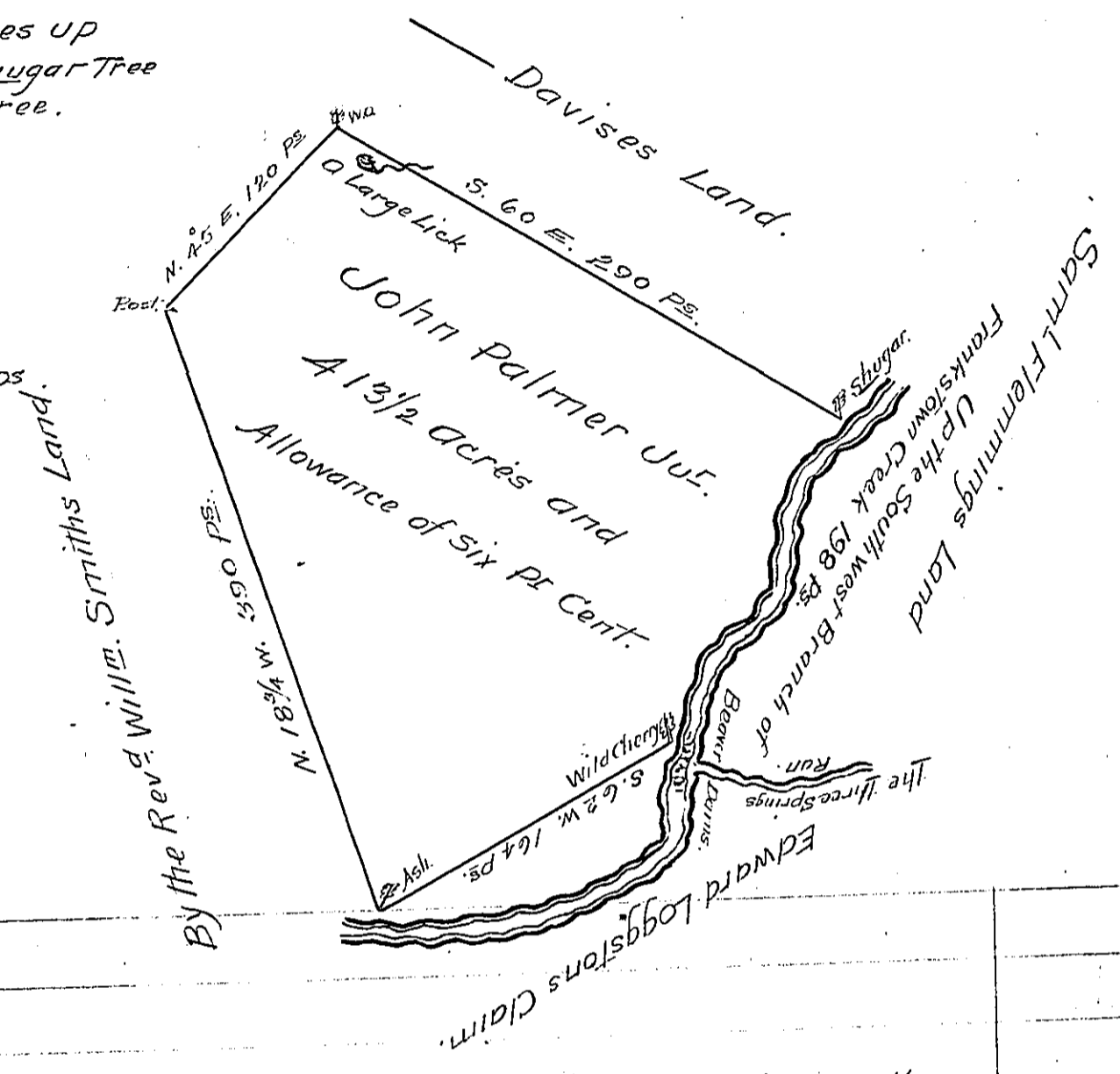


The Different Courses up the Creek from the Sugar Tree to the Wild Cherry tree.

- No Courses Per^s
 - 1- S. 85° W. 14.
 - 2- S. 26 W. 36.
 - 3- S. 8 W. 50.
 - 4- S. 60 W. 40.
 - 5- S. 7 W. 32.
 - 6- S. 38 W 26 ps.
- To the Cherry tree.



A Draught of a tract of Land situate on the South - West Branch of Franks Town in the County of Cumberland containing Four hundred & thirteen Acres & a half and the usual allowance of six p^{ts} Ct. for Roads &c. Survey'd the 18th Octo^r 1765 for John Palmer Junr. in pursuance of a Warrant dated the 20th July 1765

Richard Tea
Dept^y. Survey^r.

To John Lukens Esq^r }
Surveyor General.

IN TESTIMONY that the above is a copy of the original remaining on file in the Department of Internal Affairs of Pennsylvania, made conformably to an Act of Assembly approved the 16th day of February, 1833, I have hereunto set my Hand and caused the Seal of said Department to be affixed at Harrisburg, this twenty seventh day of March 1906.

Isaac R. Brown
Secretary of Internal Affairs.